
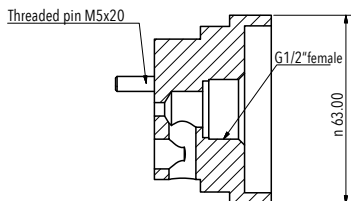
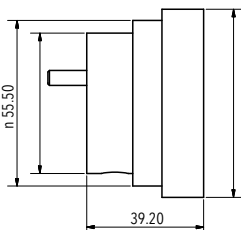
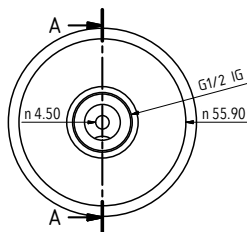


 Installation must be carried out by qualified technical staff.

 Follow the instructions of the shower head manufacturer (Rada).

1 Material supplied and tools needed




1 x Rada adapter
1 x screw M4x20

Tools required:

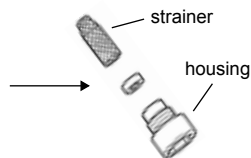
1 x hex key size 2.5
1 x hex key size 3
1 x hex key size 12

2 Installation instructions

1. Detach the Rada shower head from the wall using hex key size 2.5.
2. Detach the spray plate of the Rada shower head using hex key size 3.
3. Remove the flow restrictor and strainer using hex key size 12.
4. Place the mounting adapter on the shower head and fix it firmly with the screw supplied (hex key size 3).
5. Screw the AS WALLSHOWER comp shower filter into the adapter.

 Follow the instructions for use of the filter.

6. Replace the Rada shower head on the wall and fix with hex key size 2.5.



3 Technical data: Rada fitting adapter

Max. operating pressure	5 bar
Rada adapter, filter connection	G½" female thread
Material	POM, white

4 Storage and disposal conditions

